

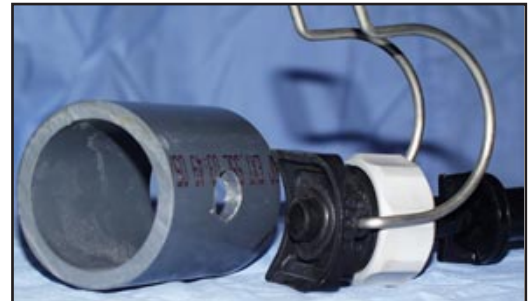


CLIP-ON NOZZLE HOLDERS

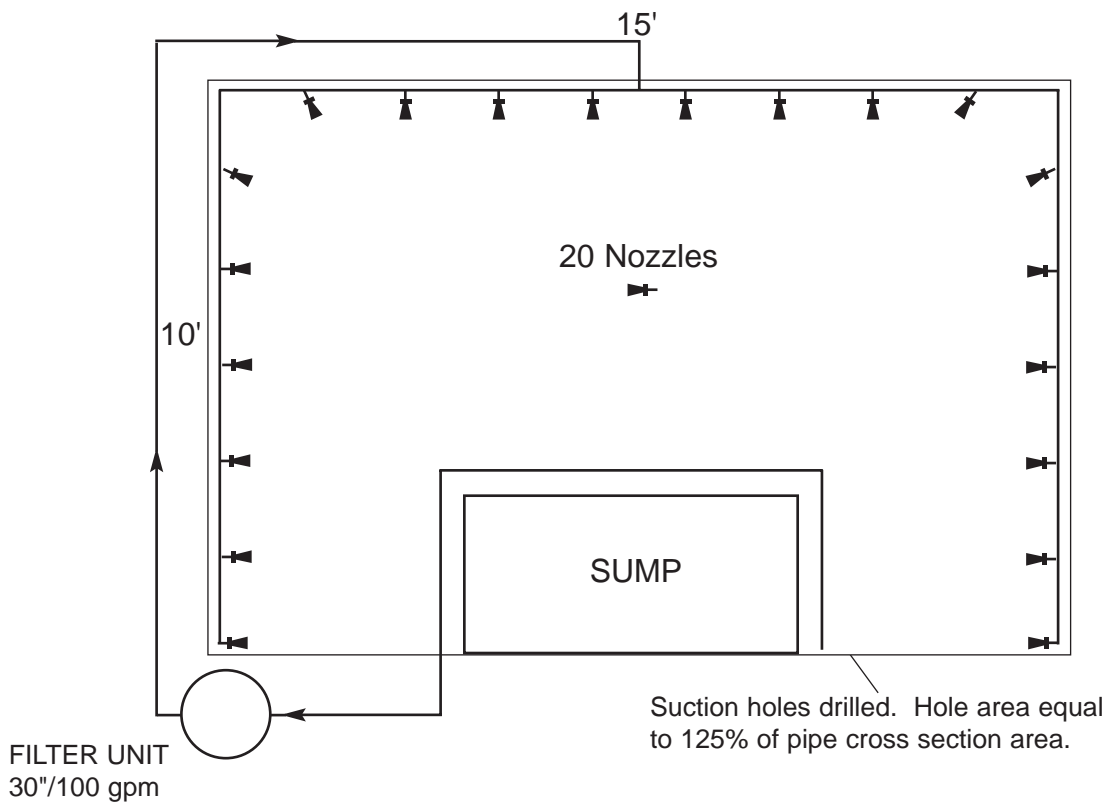


Tower-Flo's Sweeper-Eductor Nozzles can be used to greater advantage when they are installed using our Clip-On Nozzle Holders. While the Nozzle can be attached to the filter's effluent return piping system via threaded 1/4" holes, that style of installation fixes the nozzle's flow in one direction. The Clip-On Holders provide the ability to "aim" nozzles in the desired direction; flow can be directed into corners or into and around appertanances.

Clip-On S-E Nozzle Holders simply align over a 5/8" hole drilled into the return piping and clip over the pipe holding the nozzle on the hole. Holders are available for 1-1/4", 1-1/2", and 2" piping. Each Holder consists of a stainless steel spring clip, a glass reinforced polypropylene body with fingers, a glass reinforced polypropylene ball with female NPT, a glass reinforced polypropylene cap collar, and an EPDM o-ring.



TYPICAL COOLING TOWER APPLICATION OF SWEEPER-EDUCTOR NOZZLES



United Industries, Inc.
 P.O. Box 58
 Sterling, KS 67579
 800-835-3272 • 620-278-3160
 Fax 800-500-3115 • 620-278-3115
 www.towerflo.com

NSF Listed

Form NOZZ:9/99

Data presented here is the best available at the time of publication. United Industries and/or its representatives assume no liability for its use.